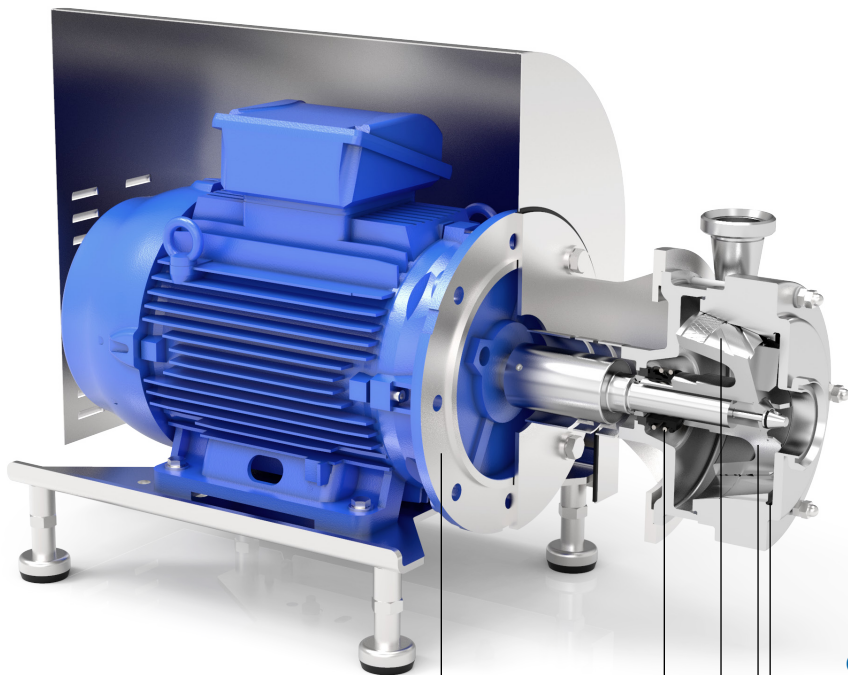
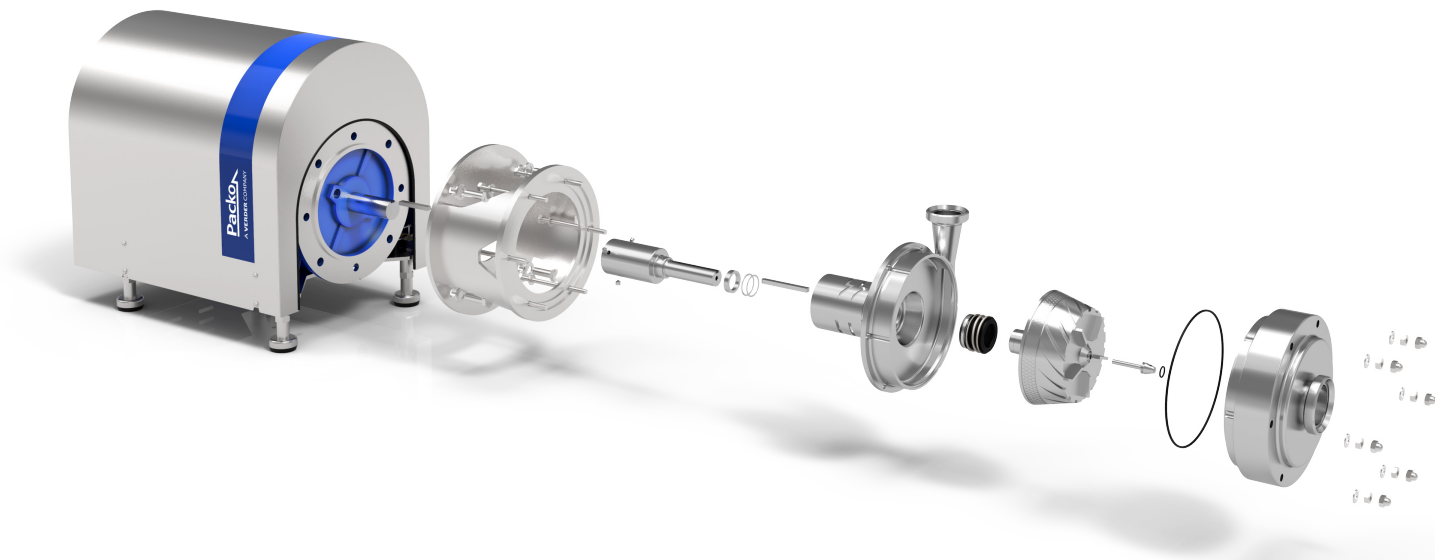


Colloid mill Series CM

Characteristics

The CM is a hygienic colloid mill with toothed rotor and stator in electropolished duplex stainless steel. They are used to grind particles in suspension precisely and with reproducible results in an annular gap between the stator and rotor which can be adjusted by changing the axial position of the rotor. The rotor and stator contain 2 milling zones and thanks to the high shear forces between rotor and stator the CM will also mix the fluid.



CM

- 1 Adjustable milling gap between rotor and stator
- 2 Integrated centrifugal impeller
- 3 Helicoidal rotor grooves
- 4 Standardized mechanical seals to EN 12756
- 5 Monobloc execution with std. IEC motors

Your benefits

- Electropolished 316L and duplex stainless steel: highly corrosion resistant and perfectly cleanable
- Adjustable milling gap between rotor and stator allows optimal setting for every product
- Easy robust construction and easy maintenance: less downtime
- Standardized seals guaranteeing worldwide easy availability and low spare parts prices
- Low noise level thanks to helicoidal rotor grooves
- Rotor with integrated centrifugal impeller improves suction capability and creates additional discharge pressure

Application areas

The Packo CM colloid mill is used for a wide range of purposes in the production line in the general food, fruit & vegetable and cosmetic industry. The principal applications are wet size reduction of solids in suspension, pulping and mashing of bulky solids and generation of high viscous suspensions and emulsions.

Series

Performances

max. flow rate	15 m³/h
max. differential head	35 m with water
max. inlet pressure	10 bar
max. fluid viscosity	100.000 cP with feed pump
max. temperature	140°C
max. motor power	45 kW
max. speed	3600 rpm
available frequency	50/60 Hz

Technical specifications

materials wetted parts	stainless steel 316L and duplex
mechanical seal configuration	single, bellow, sterile, quench, double
available material O-ring	EPDM, FKM, FEP-FKM, FFKM
connections	hygienic fittings
surface finish	hygienic quality, electropolished
certificates & legislation	



Performance curve with water for CM

